

The Ivywood | 3400 sq. ft. | ELEVATION 1

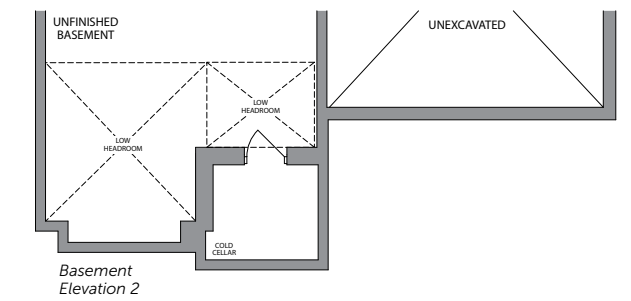
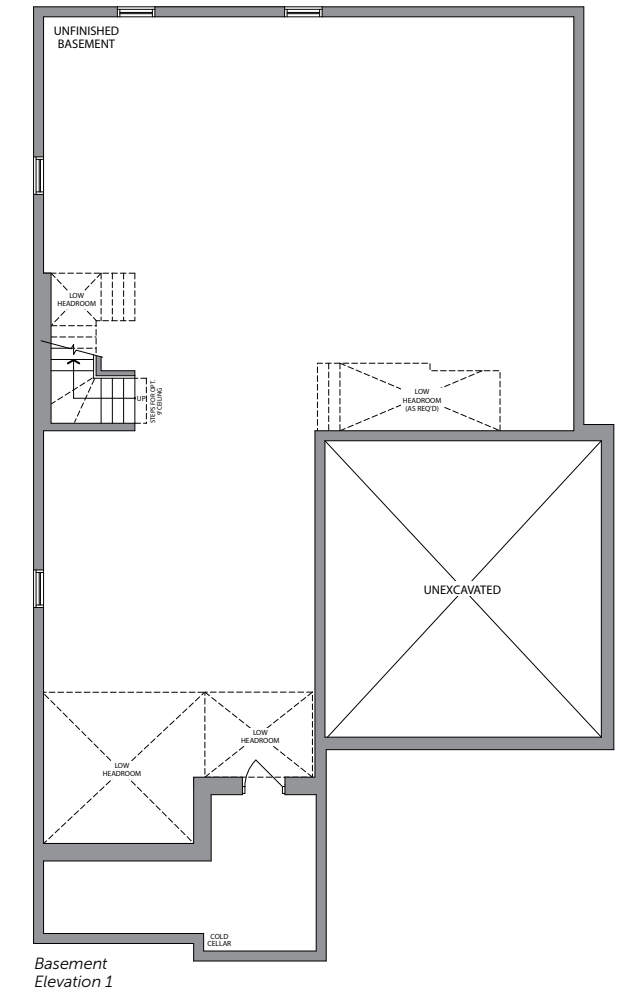
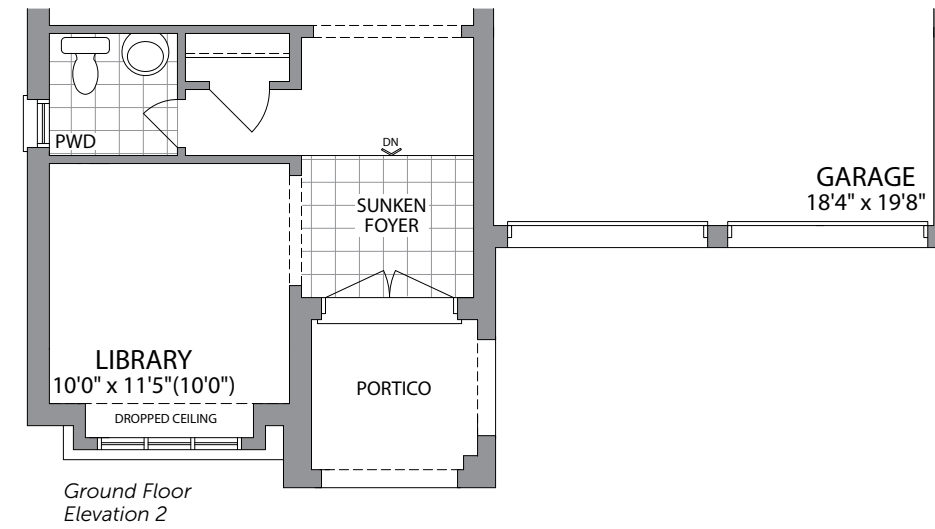
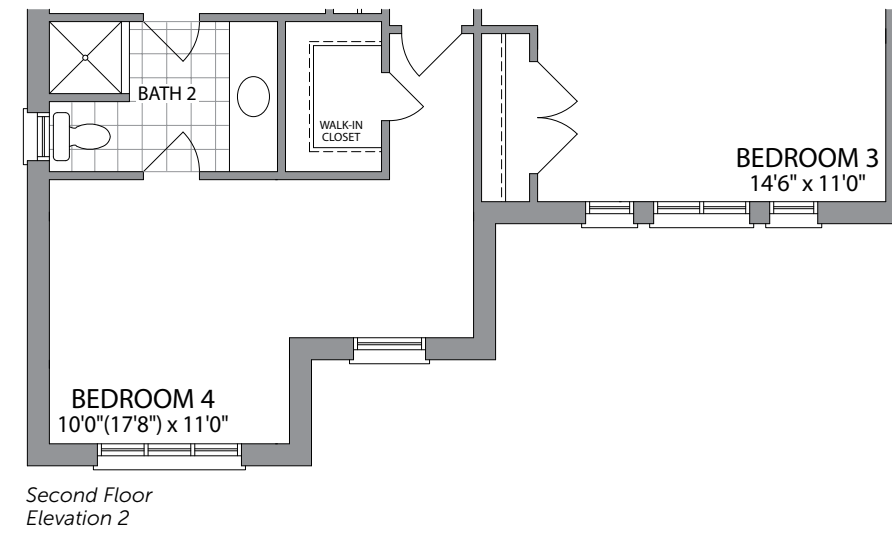
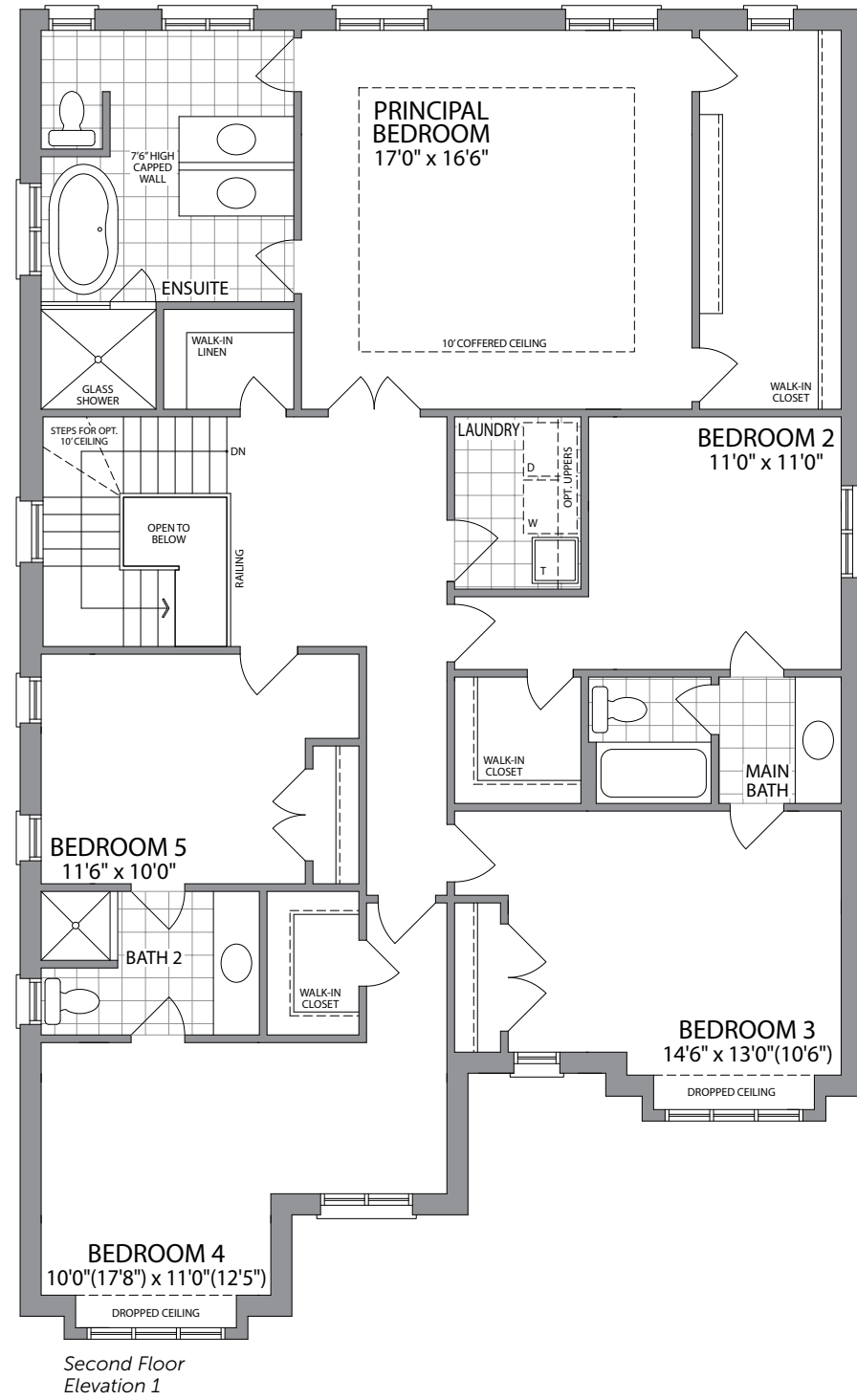
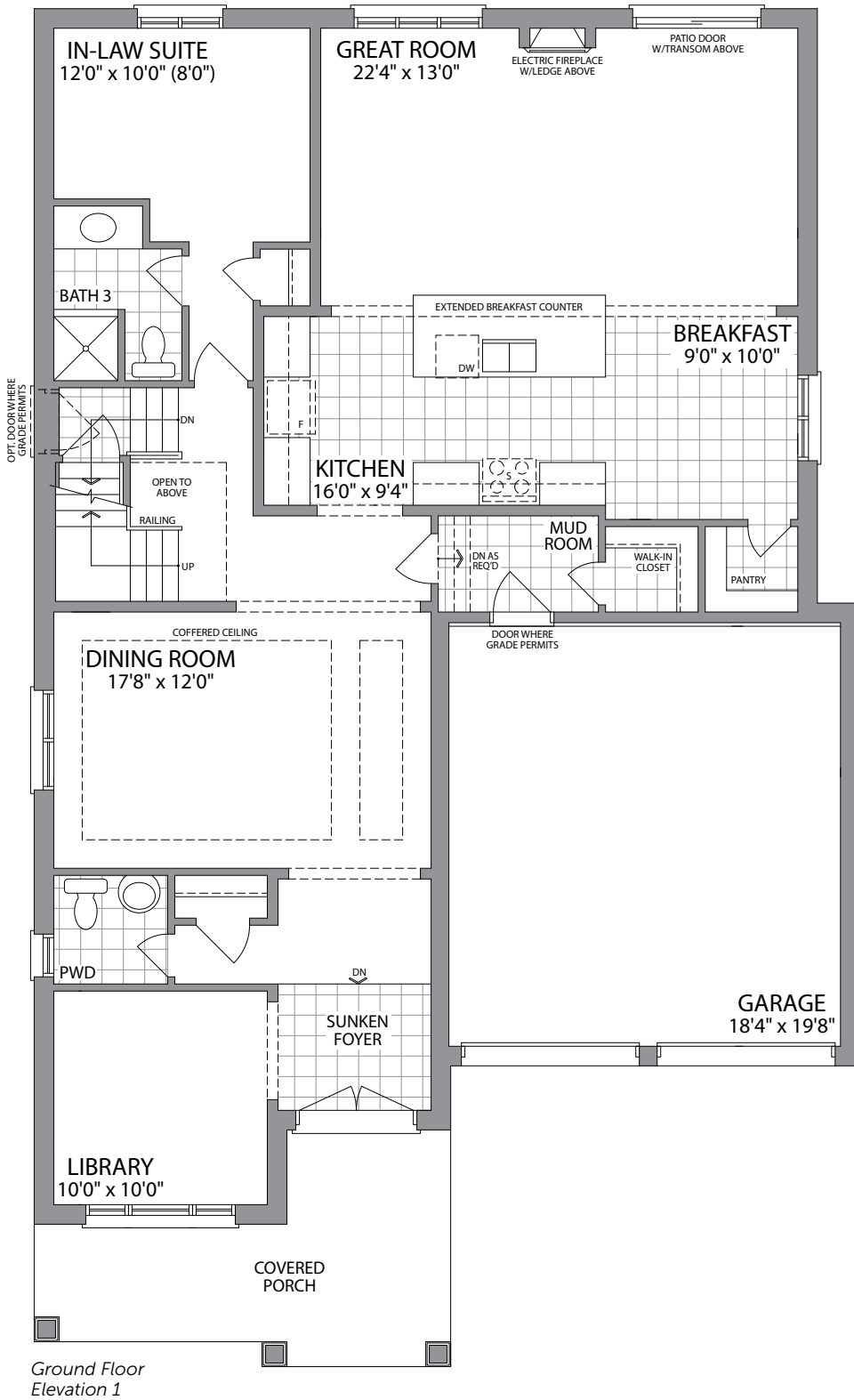
The Ivywood | 3400 sq. ft. | ELEVATION 2

HIGH POINT
IN UPPER MOUNT PLEASANT



45' DETACHED HOMES

PARADISE
DEVELOPMENTS®



The Ivywood | 3400 sq. ft.
 9' CEILINGS ON 1ST & 2ND FLOORS **PARADISE**
 DEVELOPMENTS*



Plans and specifications are subject to change without notice. E. & O. E. Actual usable floor space may vary from the stated floor area. All renderings are artist's concept. (45)