

# MAIN FLOOR

# B211U1 - PARKSIDE HEIGHTS

HARDWOOD FLOOR



FLOOR TILE



[www.paradisedevelopments.com](http://www.paradisedevelopments.com)

All colour, shades and finishes may vary from the images included. All images provided are for reference purposes only and may appear different than the actual sample.



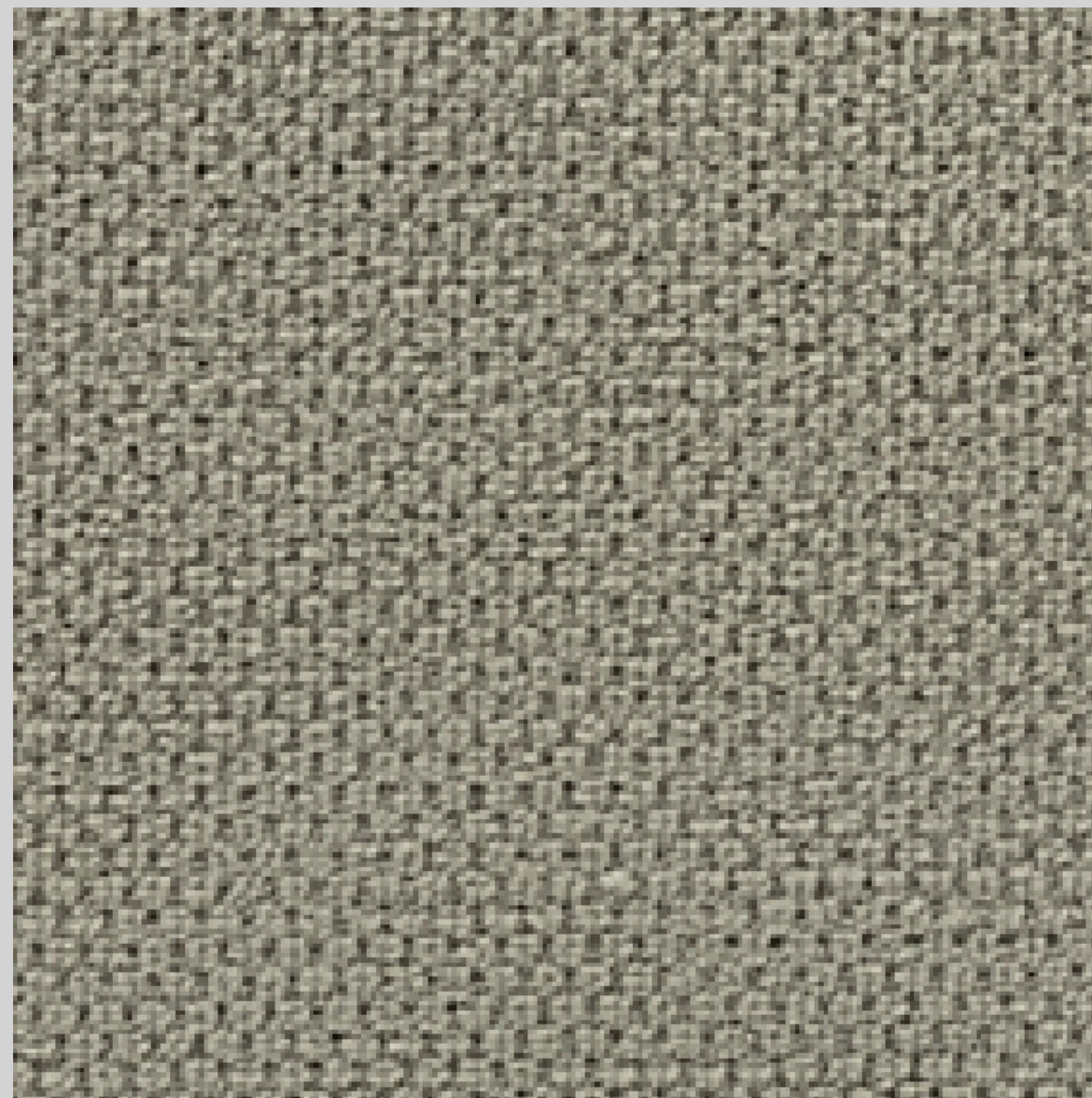
# SECOND FLOOR

# B211U1 - PARKSIDE HEIGHTS

HARDWOOD FLOOR - UPPER HALL



CARPET - BEDROOMS



[www.paradisedevelopments.com](http://www.paradisedevelopments.com)

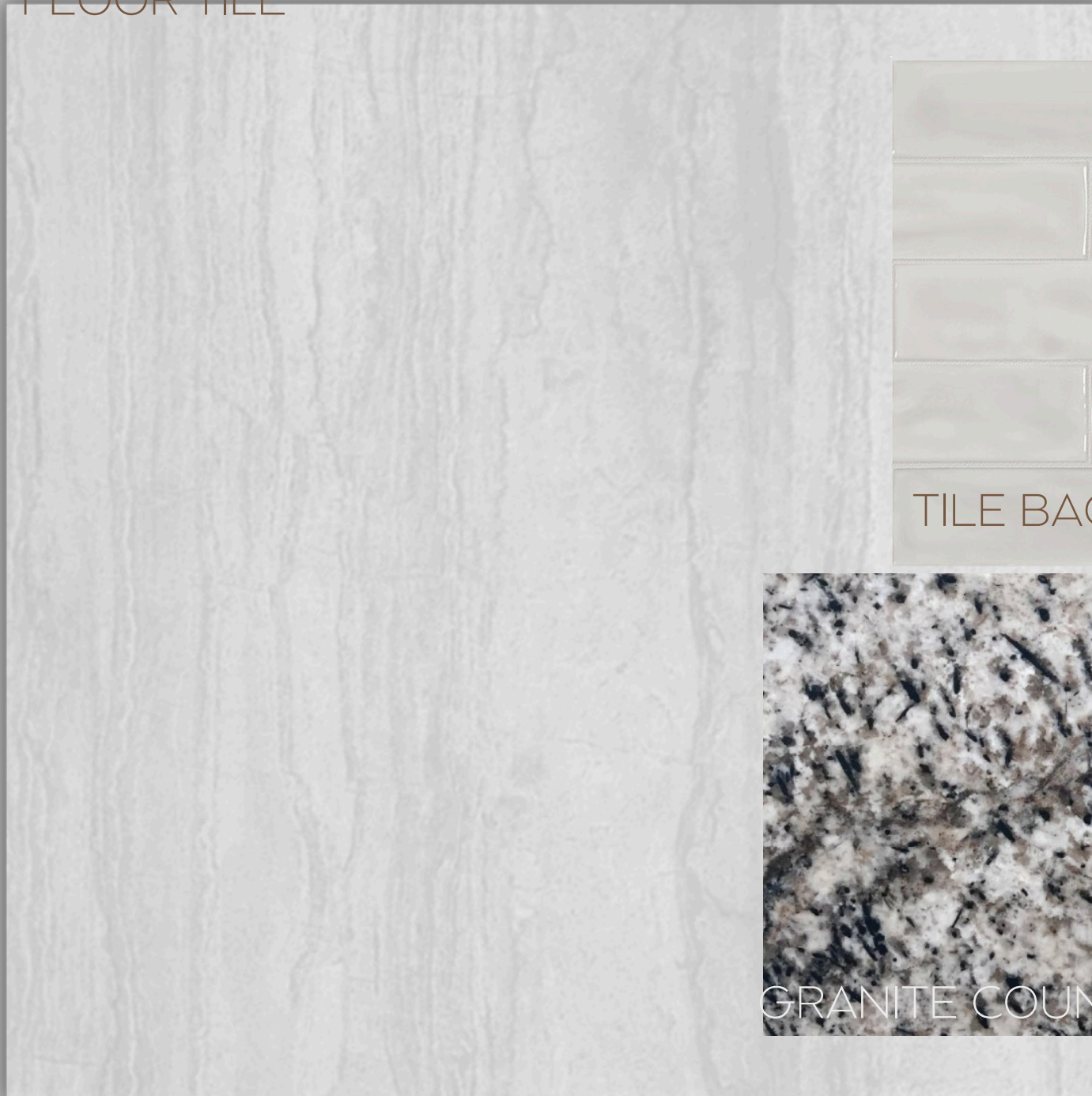
All colour, shades and finishes may vary from the images included. All images provided are for reference purposes only and may appear different than the actual sample.



# KITCHEN

# B211U1 - PARKSIDE HEIGHTS

FLOOR TILE



TILE BACKSPLASH



GRANITE COUNTERTOP



MAPLE CABINET

[www.paradisedevelopments.com](http://www.paradisedevelopments.com)

All colour, shades and finishes may vary from the images included. All images provided are for reference purposes only and may appear different than the actual sample.



# ENSUITE

# B211U1 - PARKSIDE HEIGHTS

FLOOR TILE



ARBORITE COUNTERTOP



MAPLE CABINET



WALL TILE



[www.paradisedevelopments.com](http://www.paradisedevelopments.com)

All colour, shades and finishes may vary from the images included. All images provided are for reference purposes only and may appear different than the actual sample.



# MAIN BATH

# B211U1 - PARKSIDE HEIGHTS

FLOOR TILE



ARBORITE COUNTERTOP



WALL TILE



MAPLE CABINET



[www.paradisedevelopments.com](http://www.paradisedevelopments.com)

All colour, shades and finishes may vary from the images included. All images provided are for reference purposes only and may appear different than the actual sample.

# LAUNDRY ROOM

# B211U1 - PARKSIDE HEIGHTS

FLOOR TILE



[www.paradisedevelopments.com](http://www.paradisedevelopments.com)

All colour, shades and finishes may vary from the images included. All images provided are for reference purposes only and may appear different than the actual sample.